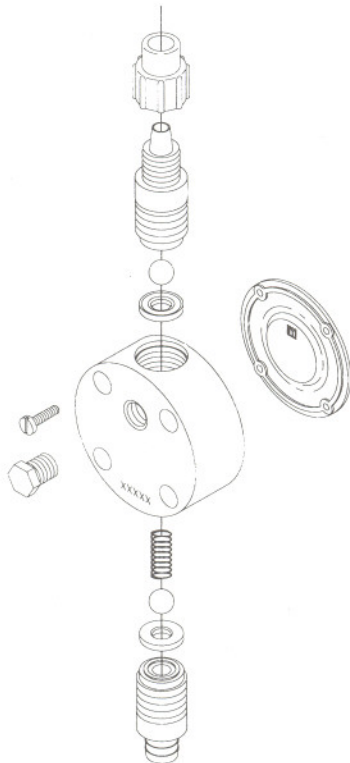
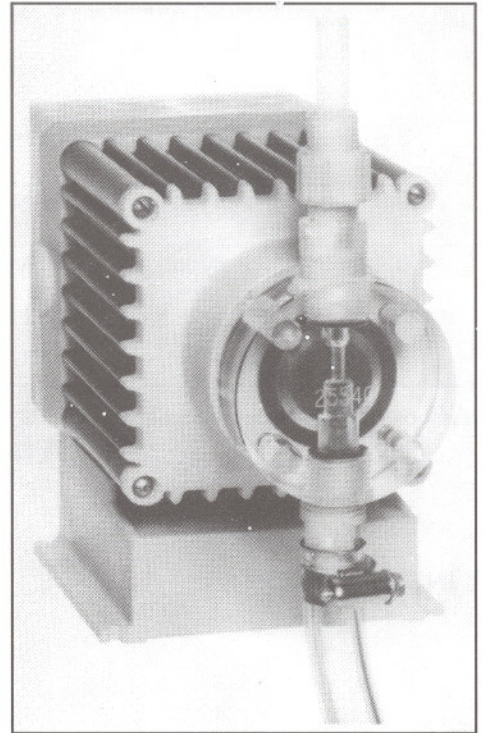


Information Sheet

High Viscosity Liquid Ends LE-20HV / LE-25HV / LE-75HV LE-85HV / LE-155HV / LE-76 / LE-86 / LE-156

- Pump polymers without dilution
- Pumps may be used with flooded suction or with as much as 3.5 ft (1m) of suction lift
- May be run dry without damage to liquid end or pump
- Pump polymers and other thixotropic viscous liquids with apparent viscosities up to 40,000 centipoise



Choose from a wide variety of pump drive assemblies. Output capabilities from .002 gph (.007 lph.) to 35 gph. (132 lph.) Your choice of manual or automatic stroke frequency control.

Liquifram™ size code must match pump drive assembly size code for compatibility. Consult LMI catalog, local representative or factory for more detailed information.

LMI
LIQUID METRONICS DIVISION
MILTON ROY
A unit of Sundstrand Corporation

8 Post Office Square
Acton, MA 01720 USA
TEL: (978) 263-9800
FAX: (978) 264-9172
<http://www.lmipumps.com>



HIGH VISCOSITY LIQUID ENDS - SPECIFICATIONS

Liquid End	Liquifram® Size Code	Head	Fittings	Valve Balls	Liquifram®	Seal Rings	Tubing Size OD
20HV	3.0	Acrylic	Polypropylene	Ceramic	Copolymer Face	Hypalon	.5 Discharge .938 Suction
25HV	3.0	Polypropylene	Polypropylene	316 S.S.	Copolymer Face	Teflon	.5 Discharge .938 Suction
75HV	1.8	Polypropylene	Polypropylene	316 S.S.	Copolymer Face	Teflon	.5 Discharge .938 Suction
76	1.8	Acrylic	Polypropylene	316 S.S.	Copolymer Face	Hypalon	.5 Discharge .938 Suction
85HV	0.9	Polypropylene	Polypropylene	316 S.S.	Copolymer Face	Teflon	.5 Discharge .938 Suction
86	0.9	Acrylic	Polypropylene	316 S.S.	Copolymer Face	Hypalon	.5 Discharge .938 Suction
155HV	0.5	Polypropylene	Polypropylene	316 S.S.	Copolymer Face	Teflon	.5 Discharge .938 Suction
156	0.5	Acrylic	Polypropylene	316 S.S.	Copolymer Face	Hypalon	.5 Discharge .938 Suction

All high viscosity liquid ends are equipped with 1/2" NPT fittings for connection to both supply reservoir and injection point.

TYPICAL INSTALLATION

