

MS1000

ISOMAG



FLOMOTION
SYSTEMS

ELECTROMAGNETIC FLOWMETERS

Reliable full-pipe flow measurement with high accuracy,
ease of installation and low operating cost



The MS1000 is available with Polypropylene,
Ebonite or PTFE liner and local or remote
mounted converter.



The MS100 conforms to
the requirements of NSF/
ANSI Standard 61 for for
1/2" to 80" sensors!

TYPICAL APPLICATIONS

- Water
- Polymers
- Wastewater
- Lime Slurries
- Dyes
- Process Chemicals
- Brine
- Caustics
- Slurries
- Acids
- Starches
- Paper Stock
- Concrete

MS100 FEATURES

- Accuracy to $\pm 0.2\%$ of rate from 1 to 33 ft/sec.
- Lower cost than flanged units.
- Twelve sizes from 1/2" to 16" Pipe Diameters.
- Flow ranges from 0.85 to 19,934 GPM.
- Standard pressure: 230 PSI.
- Volumetric flow rate measurement independent of fluid viscosity, density and temperature.
- No moving parts for zero maintenance.
- Bi-directional flow measurement.
- No pressure drop through sensor.
- Optional integral ground electrode eliminates grounding rings with plastic piping systems.
- Minimal straight pipe run required.
- Every sensor is factory wet-calibrated.



The MS1000 shown with new
optional PTFE liner and stainless
steel body.

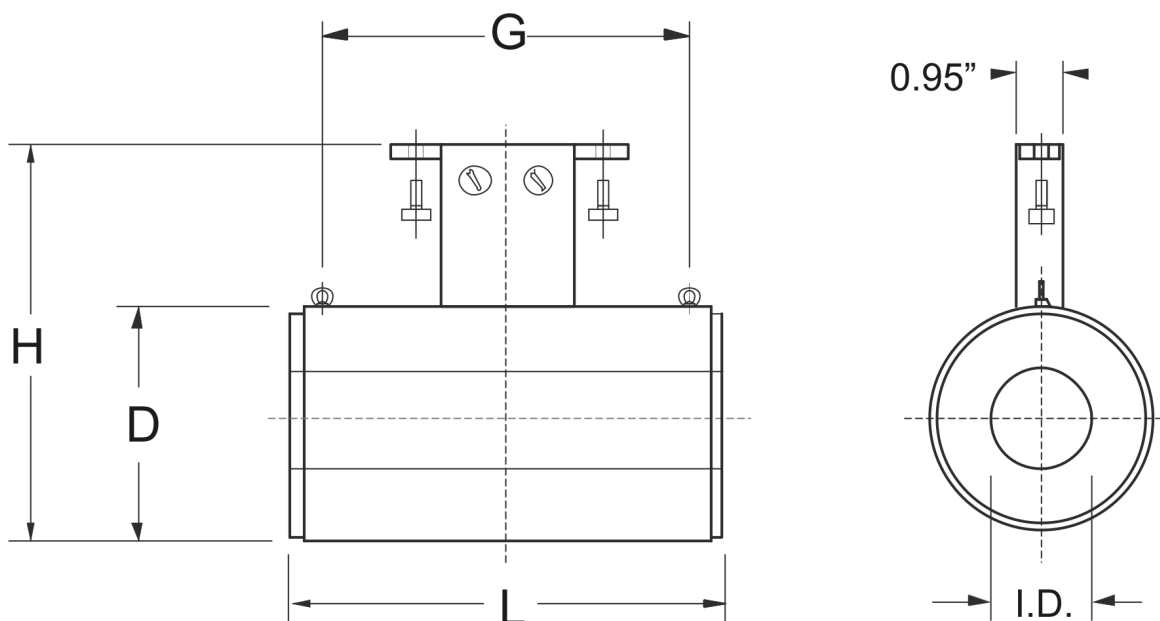
ELECTROMAGNETIC FLOWMETER

FLOMOTION MS1000 ENGINEERING SPECIFICATIONS

- Accuracy: See relevant converter data sheet
- Repeatability: $\pm 0.1\%$
- Temperature (Process)
 - +32 to 140°F (PP)
 - +23 to 175°F (Ebonite)
 - 4 to 212°F (PTFE Compact)
 - 4 to 302°F (PTFE Remote)
- Pressure: 230 PSI Std. (higher pressures upon request)
- Liner Material: PTFE, Ebonite or Polypropylene
- Flow Tube: 304 S.S.
- Body Material: Carbon steel with two-part epoxy coating (S.S. optional)
- Electrode Material: 316 S.S.*
- Number of Electrodes: 2 (3rd grounding electrode optional)
- Environmental Rating: NEMA 6
- Fluid Conductivity: 5 $\mu\text{S}/\text{cm}$ (min)
- Connections: Wafer tightened between ANSI 150 flanges

AVAILABLE SIZES AND DIMENSIONS

I.D Size (in.)	1	1-1/2	2	3	4	6	8	10	12	14	16
Min Flow Rate (gpm @ 1 ft/sec)	2.4	6.08	9.49	24.30	37.97	85.44	151.9	341.8	237.3	465.2	607.6
Max Flow Rate (gpm @ 33 ft/sec)	77.9	199.3	311.5	797.4	1246	2803	4984	7787	11,213	15,262	19,934
Length (L below)	3.94	3.94	3.94	5.91	5.91	7.09	7.87	9.84	11.81	13.78	15.75
Height (H below)	5.79	6.34	6.97	8.23	9.25	11.46	14.25	16.42	18.39	20.75	22.80
Outside Dia. - (D below)	2.21	2.76	3.39	4.65	5.67	7.87	10.67	12.84	14.80	17.17	19.21
Lift Ring Distance - (G below)	-	-	-	-	-	-	5.67	7.64	9.61	11.58	13.54
Weight (lbs.)	2.7	4.0	4.4	8.4	11.0	18.1	40.1	52.9	59.5	70.6	86.0



FLOMOTION SYSTEMS Inc.
165 Creekside Drive, Suite 112
Buffalo NY 14228

Tel: 716-691-3941

Fax: 716-691-1253

Email: info@FlomotionSystems.com

www.FlomotionSystems.com

